

HOT DEALS DIRECT



NEW
See page 4
for more info.

Order online at euromarc.co.nz

euromarc[®]
So Quick. So Easy



euromarc
ELITE
NEAT CUTTING OIL
270

Heavy (ISO 46) EP cutting oil

ELITE 270 is a heavy (ISO 46), active, non-emulsifying, high additive EP cutting oil for use on ferrous metals, stainless and nickel/chrome steels.

Formulated for use in:

- Drilling
- Reaming
- Tapping
- Boring

Applications

This product is mainly confined to uses where a high viscosity oil is required. Pipe threading by hand or machine are typical applications.

ELITE 270 can also be used on stainless and nickel/chrome steels. It is suitable for machining steels in various types of lathes – automatics, turrets and hand screw machines.

Being high in additive it is generally used on heavy duty operations such as gear cutting, broaching, turning, threading and tapping.

Typical Physical Characteristics

Property	Property Typical Value
Density, kg/L	0.892
Colour	Above 5.0
Kinematic Viscosity at 40°C, cSt	42.9
Flash point (PMCC) °C	215 Typical

Order online at euromarc.co.nz | 0800 278 600 | sales@euromarc.co.nz



Buy 2x500ml
Get 1 x 500ml
FREE

500ml - OIMRMCT505

\$33.90ea

Pack of 12
\$31.90ea

5L - OIMRMCT550

\$99.98ea

Pack of 4
\$83.83ea

Replacement for Morris MCT

So Quick. So Easy 1





euromarc
ELITE
WATER SOLUBLE CUTTING FLUID **272**



Bio-stable multi-purpose EMULSIFIABLE metal working fluid.

ELITE 272 is a bio-stable EP II multi-purpose environmentally friendly metal working fluid. It is free from nitrite, nonyl- phenol, boron and heavy metals. It is a concentrate that when added to water forms a stable milky emulsion. It contains emulsifiers, biocide corrosion inhibitors and lubricity improvers.

Biocide aids in the preservation of ELITE 272 as it has a broad activity spectrum against bacteria, moulds and yeasts that cause deterioration of water-based metal working fluids.

Performance Benefits

- Excellent corrosion protection.
- Good hard water stability.
- Excellent emulsion stability.
- Excellent foam control under soft water conditions.
- Compatible with non-ferrous metals.

Applications

ELITE 272 is recommended for various machining operations such as cutting, drilling, grinding, milling, reaming, tapping, etc. It can be used for both ferrous and non-ferrous metals.

Sizes

- 5L
- 20L



5L - OIMCS10005

\$91.61^{ea}

20L - OIMCS10025

\$296.97^{ea}

Replacement for Morris S/C 1000



euromarc
ELITE
WATER SOLUBLE CUTTING FLUID **274**



Synthetic Bio-stable metal working fluid

ELITE 274 is a synthetic biostable soluble cutting oil for use with metals containing a highly sophisticated system of extreme pressure additives, anti-foam, anti-rust and anti-bacterial agents which form a stable milky white emulsion when added to agitated water. The EP additive is a chlorine based branched chain, near pure compound.

Biocide aids in the preservation of ELITE 274 as it has a broad activity spectrum against bacteria, moulds and yeasts that cause deterioration of water-based metal working fluids.

Performance Benefits

- Long service life.
- Good surface finish.
- Increased tool life between sharpening.
- Faster cutting speeds.
- Very stable emulsion.
- Excellent cooling capabilities.
- Excellent rust protection.

Applications

- Forms a very stable emulsion to assist in the rapid machining of all metals to comply with the demands of current production engineering techniques.
- Forms an instant white emulsion which offers an efficient coolant and incorporates a sophisticated anti rust system which is Nitrate free.

Sizes

- 5L
- 20L



5L - OIMCS60005

\$109.78^{ea}

20L - OIMCS60025

\$357.55^{ea}

Replacement for Morris S/C 6000

Bostik MS Safe Seal Sealant - Black



A multipurpose odour free, isocyanate free & solvent free sealant for construction & building. Safe Seal is fully paintable according to DIN 52452, PT4. Not designed to seal immersed joints or below waterline applications.

Applications

- Sealing expansion joints
- Sealing in general construction
- Sealing most building materials

Features

- Meets NZBC E2/AS1
- BRANZ appraised: Appraisal No.705 (2010)
- Complies with ISO 11600/F/25LM
- Suitable for LOSP
- Low odour
- Low VOC
- Can be used in green buildings
- Non slump
- Easy to gun and tool
- Paintable
- Total movement 50%(± 25%)
- Very low shrinkage



Black - ADMSBC0430

\$17.90ea

12 or more
\$16.90ea

Bostik MS Safe Seal Sealant - White



A multipurpose odour free, isocyanate free & solvent free sealant for construction & building. Safe Seal is fully paintable according to DIN 52452, PT4. Not designed to seal immersed joints or below waterline applications.

Applications

- Sealing expansion joints
- Sealing in general construction
- Sealing most building materials

Features

- Meets NZBC E2/AS1
- BRANZ appraised: Appraisal No.705 (2010)
- Complies with ISO 11600/F/25LM
- Suitable for LOSP
- Low odour
- Low VOC
- Can be used in green buildings
- Non slump
- Easy to gun and tool
- Paintable
- Total movement 50%(± 25%)
- Very low shrinkage



White - ADMSWC0430

\$17.90ea

12 or more
\$16.90ea

Bostik Simson ISR70-30 Adhesive Sealant



A high quality elastic sealant / adhesive based on Silyl Modified Polymers (SMP) and, used with the Dual SMP technology. It is suitable as adhesive or sealant for structures in industrial applications requiring high strength.

Applications

- Elastic bondings and sealings in e.g. bus-, caravan-, train- and truck construction
- Bonding of corner profiles of aluminium or polyester on trailers
- Bonding of polyester parts on metal frames
- Bonding of floor systems
- Sealing welded seams

Features

- Solvent-, isocyanate- and PVC free.
- Very good UV-resistance and ageing properties.
- In general good adhesion on several substrates without the use of a primer.
- Permanent elastic within temperatures from -40°C till +120°C.
- Neutral, odourless and fast curing.
- Paint compatible with most industrial paint- or lacquer systems, both alkyd resin and dispersion based (due to the large scale of different types of industrial paints a paint compatibility test is recommended).
- Paintable after skin forming (wet on wet); this will not influence the curing speed.



Black - ADISBC0290

\$22.90ea

12 or more
\$21.90ea

Grey - ADISGC0290

\$22.90ea

12 or more
\$21.90ea

White - ADISWC0290

\$22.90ea

12 or more
\$21.90ea



ONE LOW FLAT SHIPPING RATE*

Any size. Anywhere. \$10.80

All orders ship at one low flat rate.

We'll ship your order anywhere in New Zealand.

euromarc®
CRAFTSMAN

NITRILE
DISPOSABLE
GLOVE **343**



NEW

Puncture & abrasive resistant

Black Industrial
Grade Nitrile Glove

7mil Thickness
for Strength

100 pieces per box



Oil & Chemical resistant

Powder free

Medium - WSGNHDB00M
Large - WSGNHDB00L
Extra Large - WSGNHDBXLG

Box of 100pc
\$31.53ea

10 boxes
\$29.67ea

FREE

Purchase any Twist Knot or Crimped Brush and receive a **FREE** Hand Brush



euromarc®
ELITE

CRIMPED
WIRE WHEEL **624**

- Crimped brass-coated steel, for stationary machines.
- Multi-bore to fit most bench grinders.
- Brass-coated crimped (wavy) wire for mild scrubbing action, rust, scale, paint removal, deburring.
- No quality shortcuts, but great value.
- 28G or 0.3mm crimped wire



150x20
HSW15020MB

\$21.88ea

200x25
HSW20027MB

\$33.28ea



euromarc®
ELITE

1 ROW HAND
WIRE BRUSH **640**

Long life design - crimped single row curved style, ideal for internal corners, channels.

- Designed for the removal of welding scale, forged sand debris, rust, paint, and any kind of adherence.
- Top quality 1 row crimped wire in stainless and brass coated steel.



Steel
HSHIRT3202

\$5.10ea

Pack of 20
\$4.98ea



Stainless
HSHIRS3204

\$8.22ea

Pack of 20
\$6.16ea



euromarc®
ELITE

TWIST KNOT
BEVEL BRUSH **606**



Angle/saucer shape, easy & fast to use on corners, contours, weld clean-up.

- Tempered steel wire, smooth action and perfect balance.
- Twist knot wire perfect for aggressive action on rust, scale and surface preparation, with very fast stock removal.
- Work in corners, contours, channels flat areas and V's because of its beveled shape, can use flat or at right angles.
- 24G or 0.5mm twist knot wire, stainless made with 304.

Steel 115xM14
HSK115M142

Pack of 5
\$18.47ea

Steel 150xM14
HSK150M142

From
\$71.63ea

Stainless 115xM14
HSKS115M14

Pack of 5
\$33.14ea



euromarc®
ELITE

TWIST KNOT
CUP BRUSH **608**



Durable tempered wire for operator safety, aggressive action & removal.

- Twist knot wire for extra safety, longer wear life.
- Removes high rust corrosion, surface staining paint and deburring.
- Cup shape for flat surfaces, external corners & edges.
- 24G or 0.5mm twist knot wire.

Steel 75xM14-M10
HST075M14B

Pack of 5
\$14.98ea

Steel 100xM14x2
HST090M142

Pack of 5
\$23.72ea

Steel 125xM14x2
HST120M142

Pack of 5
\$26.67ea



euromarc®
ELITE

TWIST KNOT
CUP BRUSH **608**



Durable tempered wire for operator safety, aggressive action & removal.

- Twist knot stainless steel wire for extra safety, longer wear life.
- Removes high rust corrosion, surface staining paint and deburring.
- Cup shape for flat surfaces, external corners & edges.
- 24G or 0.5mm twist knot wire.

Stainless 75xM14-M10
HSTS075M14

Pack of 5
\$30.11ea

Stainless 100xM14x2
HSTS100M14

From
\$144.36ea



euromarc®
ELITE

TWIST KNOT
WIRE WHEEL **604**



Ideal for weld bead cleaning, hard tight twist for long life and smooth balance action.

- Tempered steel for smooth action and fast removal of slag spatter and oxidation.
- 125x6x22mm: 40 knots per wheel, for 5" angle grinders.
- 150x6mm xM14: 48 knots per wheel for long life and smooth running on 7-9" angle grinder.
- 24G or 0.5mm twist knot wire.

Steel 125x6x22
HSRT125622

Pack of 5
\$18.60ea

Steel 26g 150x6xM14
HSRT150625

Pack of 5
\$21.46ea

Stainless 25x6x22
HSRS125622

Pack of 5
\$34.34ea



euromarc®
ELITE

CRIMPED CUP
BRUSH **628**



Smooth action from crimped flexible wire, good for light to mild cleaning or removal.

- Tempered steel wire, smooth action and perfect balance.
- Cup shape for flat surfaces, external corners & edges.
- 75mm supplied with thread adapters to fit 4", 4-1/2", 5" angle grinders.
- 27G or 0.35mm crimped wire.

Stainless 125xM14x2
HSC12014SS

\$81.54ea

Steel 75xM14-M10
HSC075M14B

Pack of 5
\$14.50ea

Steel 100xM14x2
HSC100M142

Pack of 5
\$21.24ea

Steel 125xM14x2
HSC120M142

Pack of 5
\$22.36ea



euromarc®
ELITE

CABLE CRIMPED
CUP BRUSH **618**



Twisted together crimped wire for smooth but heavy action, good for medium scrubbing action, rust removal, surface staining paint and deburring.

- Cable crimped is a crimped wire twisted together for longevity and demanding users, but still gives a good finish.
- Stainless 304 wire so this can be use on all INOX surfaces.
- 27G or 0.35mm crimped stainless steel wire.

\$40.44ea

Stainless 75xM14
HSC07514SS

Pack of 5
\$35.81ea

SPUNLITE

Christchurch

‘It just looked like an obvious solution to help us out. It was a no brainer for us.’

Alex Walker, Production Manager
about how QUICKSTOCK™
integrated into their workshop.



Tell us a bit about Spunlite

Spunlite Poles is New Zealand's leading manufacturer and supplier of pole solutions. We have over 55 years of experience providing custom and standardised pole solutions. We pride ourselves on offering a customised and cost effective, efficient solution to our customers and understanding the full range of their needs.

How did you manage consumable stock inventory before?

Before QUICKSTOCK™ we managed quite departmentalised. So the different departments would look after their own stocks. This led to it being quite confusing as to who was looking after certain consumables. People got protective over the stock they were keeping. It led to a bad culture in the business.

What were some of the costs involved in ordering before QUICKSTOCK™?

Some of the costs we had were multiple people sending multiple orders. We had numerous amounts every week. Lots of people doubling up on their admin time.

WATCH THE
VIDEO ONLINE



What made you decide to give the QUICKSTOCK™ solution a go?

This solution was brought to our attention by Euromarc and it was something we hadn't seen before. I've had quite a bit of training in lean manufacturing and I understand the wastes around people walking around looking for stuff, so it seemed like a no brainer to us.

How has the QUICKSTOCK™ solution integrated into your workshop processes?

The integration of QUICKSTOCK™ couldn't have come at a better time. It allowed us to worry about one less thing, and that had previously caused us multiple interruptions throughout every day.

With the culture we have in our business and the trust we have in our staff this works seamlessly. We keep the cabinets unlocked so they can get the stuff when they need it, and they don't have to wait around for it.

Would you recommend the QUICKSTOCK™ solution to other engineering companies?

I would certainly recommend this solution. Using QUICKSTOCK™ was just a no brainer. It was as simple as that.



‘With the culture we have in our business and the trust we have in our staff this works seamlessly.’

- Alex Walker, Production Manager

DEGREE43

Christchurch

‘The guys have stopped squirreling consumables away in their toolboxes. We know that what we’ve got is going to be always there.’

Directors Dwayne Dunn and Marty Long talk about the improvements QUICKSTOCK™ has made to their workshop.



‘We were looking for a tidier way to do things, a more efficient way of doing things.’

- Dwayne Dunn, Director



Tell us a bit about Degree43 Hot Tubs

Degree43 Hot Tubs started up as a bit of a side hustle really from our other business. It was to smooth out some of the lows that we were having. We had no products so we decided to have a crack at building hot tubs.
- Dwayne Dunn, Director

What were some of the costs involved in ordering before QUICKSTOCK™?

Everything's handmade, from the knuckling of a seat to the rolling. Everything's done by hand out here by the guys in our workshop. The biggest cost we would have would be down time from our guys having to go and get gear.
- Marty Long, Director

How did you manage consumable stock inventory before?

We didn't really have much of a management system on our consumables, so we tended to wait until the guys would come to us. - Dwayne

The guys might not realise they were on the last cut-off disc. Someone would grab it, and someone wouldn't tell the other person, and just that communication which is natural when you're super busy. - Marty

What made you decide to give the QUICKSTOCK™ solution a go?

We decided to give QUICKSTOCK™ a go. Euomarc was there when we moved into our new building. We were looking for a tidier way to do things, a more efficient way of doing things. - Dwayne

How would you say QUICKSTOCK™ has improved your business?

QUICKSTOCK™ has improved our business through just efficiencies. The guys can go straight to the cabinet, they know everything's there. They know it's always stocked up. No one has to come and ask me. It's just super efficient. - Marty

Were there any hurdles in getting QUICKSTOCK™?

There were no hurdles, it was something that we really needed. It fitted in so well to our new workshop. It's kept everything really tidy, and the guys know where to find it. They go straight to the cabinet, it's too easy.

The guys have stopped squirreling consumables away in their toolboxes. We know that what we've got is going to be always there, and they know it's always going to be there as well. So we're not paying for that extra cost of having everyone's toolboxes full of consumables.

Would you recommend the QUICKSTOCK™ solution to other engineering companies?

I think QUICKSTOCK™ is a no brainer. If you've got that sitting in your workshop, the amount of time you save through not having to order gear, or having your guys have to go and get gear. I think everyone should have one.
- Marty

I would absolutely recommend the QUICKSTOCK™ solution to other engineering companies. It's worked perfect for us, I can't imagine why it wouldn't work for you.
- Dwayne

WATCH THE VIDEO ONLINE



CASE STUDY

Bandsaw Blades



German quality bandsaw blades with bi-metal long life cutting tips and ground finish for higher accuracy and keener edge.

- Great value for money with excellent cuts.
- Huge range of blade lengths, widths and tooth pitches to cut most material types.
- M42 bi-metal long life cutting tips with 8% cobalt content, or carbon blading.
- Ground finish for higher accuracy and keener edge, resulting in improved service life.
- Spring steel backing with 4% chromium content for high flexibility and metal fatigue resistance.

MADE TO ORDER

LARGE RANGE AVAILABLE
Login at euomarc.co.nz to find your size, TPI and price.

Hacksaw Blade



General purpose blade for hand hacksaws.

- 300mm long.

18tpi BSH30018SB	24tpi BSH30024SB	32tpi BSH30032SB
\$3.59ea	\$3.59ea	\$3.59ea

Medium Bi-Metal Reciprocating Sawblade



Best for medium metal cuts 3-6mm.

- Thin .035" kerf blade for fast flexible cuts.
- M42 high performance bi metal.
- Steel, aluminium, copper and cement board.

230mm BSREM09018	
\$8.72ea	5 or more \$8.10ea
300mm BSREM12018	
\$13.80ea	5 or more \$12.98ea

Aluminium Cutting Blade Angle Grinder



Specialist aluminium 2.5mm cutting or 4mm grooving/weld prep blade.

- 2.5mm thick blade for cutting
- 4mm thick blade for grooving or weld prep.
- Specialist only use on aluminium, with great care.

110x4x22 TCBM11026F	110x2.5x22 TCBM11025A
\$104.45ea	\$102.21ea
125x4x22 TCBM12526F	125x2.5x22 TCBM12525A
\$116.68ea	\$108.40ea

Alpha Holesaw Arbour/Pilot Drill



Extra pilot drills and small or large arbors for bi-metal holesaws.

- 4-1/4" pilot drill for small arbor.
- 3- 1/4" pilot drill for large arbor
- Small arbor for holesaws sizes 12 - 30mm
- Large arbor for holesaws sizes 32 - 198mm.

31/4 DRBHA08533	4-1/4 DRBHA08535
\$6.24ea	\$8.05ea
Small Arbour DRBHAARB-1	Large Arbour DRBHAARB-2
\$16.74ea	\$41.34ea

Alpha Bi-Metal Cobalt Holesaw



Best bi-metal construction with 8% cobalt for longer life. Made in USA.

- The very best bi-metal construction, with a 4/6 variable tooth pitch for fast cutting.
- 50mm cutting depth and 5mm backing plate for long lasting use.
- Shatter-proof. 8% cobalt bi metal, available in 9 and 12pc sets.

LARGE RANGE INSTOCK
From 16mm(5/8") - 152mm (6")
Login to euomarc.co.nz

From \$22.02ea

15mm Wide Chisel Tip Marker Pen - White



15mm Wide Chisel Tip Marker Pen.

- Writes on most surfaces including rough surfaces.
- Permanent on porous surfaces.
- Removable on glass.
- Capped style.
- Xylene Free.
- Non toxic.
- Made in Japan.

ASTPEKW017

\$8.99ea

**Pack of 5
\$8.59**ea

Red Builders Pencil - Medium Lead



Carpenters Pencil is an oblong section which can be sharpened to a chisel shaped edge, for general marking on most surfaces.

- Red - medium lead for general carpentry.
- Super bonded to prevent breakages.
- Premium German graphite core.
- 180mm long.

ASTPENCM01

\$1.79ea

**Pack of 12
\$1.29**ea

**Carton of 144
\$0.97**ea

Sterling S/Steel Metric Ruler



The Sterling stainless steel rulers are manufactured from quality hardened steel clear etched markings and ISO9001 certification.

- The Sterling range of stainless steel rulers deliver accurate measurements and straight edges.
- ISO9001 certified manufacturer assures accuracy.
- All markings are etched into the Stainless Steel for durability.
- Rulers have conversion chart on back.

150mm - TORUSSM150

\$3.77ea

**3 or more
\$3.19**ea

300mm - TORUSSM300

\$6.98ea

**3 or more
\$6.15**ea

Stringline White - 80m



TUFF white stringline.

- Braided High Stretch Nylon.
- 80 meter long.
- Rot resistant.

TOSLWHM080

\$11.97ea

**3 or more
\$10.50**ea



Supply Chain Holding You Back?

Let's not beat around the bush – supply chain's been a big pain in the butt for the past few years and we're not seeing signs of vast improvement any time soon.

The compound effects of the global pandemic have made shipping slow and expensive...if you can get the products you need at all.

In typical kiwi fashion, we've sucked it up, accepted the added expense, long waiting times and substitute products and just got on with the job...but it's time we stopped.

- Stop wasting time waiting on couriers to arrive.
- Stop sacrificing quality production by using inferior substitute products.
- Stop adding the costs of excess shipping, order handling, and lost production time to your bottom line.

What we can accept, is that the old way of doing things is no longer working. Production demands have increased while the resources needed have decreased, and we need to adapt to more innovative ways of doing things if we're to keep businesses afloat, quality employees paid what they deserve, and customers happy.

QUICKSTOCK's been operating now for over 4 years, has more than 200 engineering companies on board, and is proven to be a more efficient, cost-effective way of managing consumable stock.

QUICKSTOCK™ customers have chosen not to let supply chain issues hold them back.

- They're not waiting on orders to arrive – product is always available on-site.
- They're not running down to the shop for supplies – they have their own supply 'shop' on-site.
- They're not wasting money on shipping, delayed production, or someone's time in managing stock and placing orders – the onus is on Euromarc to ensure they've got ongoing supply.

Stop accepting supply chain failures and adapt to a better way of doing things. It's been a 'no-brainer' for over 200 companies nationwide, and it can be for you too.

Cougartron ProPlus Weld Cleaning - Starter Pack



Faster than ever before! This is the only workhorse weld cleaning system that can clean TIG and MIG!

- Cougartron ProPlus delivers a unique combination of electricity, heat and chemistry for fast superior weld cleaning, surface polishing and etching.
- This is the electrochemical cleaning machine you need if you want to clean any size weld in MIG and TIG. The ProPlus even has enough power to clean aluminium!
- The ProPlus is the lightest machine on the market for its power - 7.2Kg 320mm high. Compact and lightweight, perfect for transporting on the job.
- With the power readout screen you can get the exact power output you need, and the precisely controlled current gives you consistent results.

ProPlus Starter Kit includes:

- Cougartron ProPlus machine
- Orange lead with handle
- Black lead with clamp
- Cougartron 'Powerbrush' brush (10 pcs)
- Wand/sliding shroud set
- CGT-550 Weld-Cleaning & Polishing Fluid - 1L
- CGT-100 Neutralising Fluid - 0.5L
- Cougartron microfibre cloth
- Spray-bottle
- Cougartron dipping container
- Carry Case
- USB with user manual and MSDS

PACPPC1016

\$7,198ea

Cougartron Inox Muscle Weld Cleaning - Starter Pack



Small and compact, with the latest CougarSYNC technology.

- Very compact and lightweight machine with the highest power to weight ratio in the market. Only 3.5Kg, 300mm high.
- 2 mode adjustments for weld cleaning and surface polishing, with power output adjustment. With the power readout screen you can get the exact power output you need, and the precisely controlled current gives you consistent results
- Economy version for everyday Stainless Steel TIG jobs, great for workshops, factories, onsite work.

Inox Muscle Starter Kit includes:

- Cougartron Inox Muscle machine
- Orange lead with handle
- Black lead with clamp
- Cougartron 'Powerbrush' brush (5 pcs)
- Wand/sliding shroud set
- Carry Case
- USB with user manual

PACPMC1024

\$3,790ea

Cougartron CGT-550 Weld Cleaning Fluid

- CGT-550 weld cleaning and polishing liquid is certified for use with Cougartron electrochemical machines.
- Stronger for optimum speed.
- 5L
- Note: This is classified as a DG for shipping, so will take up to 5 days delivery.



PACFCG5505

\$133.31ea

Cougartron N1 Neutralising Fluid

- CGT-N1 is the standard neutralising and rinsing fluid for neutralising the CGT-550.
- Applied generally with spray applicator.
- 5L



PACFN10005

\$108.85ea

Spray Applicator Bottle and Trigger

- High quality spray applicator for industrial use.
- Able to use with most chemicals, won't leak on angles.
- 500ml



SPXLADB50

\$7.75ea

12 or more
\$6.60ea

Cougartron PowerBrush

- The popular Powerbrush is fine tuned to get the best long lasting performance and cover on weld cleaning machines.
- Power rate between 0-50
- Thread: M6x1.0 Length: 65mm



Standard Thread
PACBPS0001

\$30.56^{ea}

Pack of 10
\$26.52^{ea}



Tapered Thread
PACBPS0002

\$30.56^{ea}

Pack of 10
\$26.52^{ea}

Cougartron SuperBrush Std Thread

- Double the size of the standard PowerBrush, with premium bristles for faster weld cleaning.
- Fine tuned to get the best long lasting performance and cover on weld cleaning machines.
- Best Power rate between 30-50
- Thread: M6x1.0 Length: 65mm



PACBPS0004

\$58.71^{ea}

Pack of 10
\$50.76^{ea}

Cougartron Wand with Twisting Shroud

- Superb results with exact control.
- Eliminates damaged or half used brushes.
- Reduces fluid use.
- Increase brush life by up to 100%
- Work up to 50% faster
- Replaceable shroud
- Components heat resistant to 327°C



PACBEW2167

\$229.15^{ea}

euromarc ELITE

WELD ANTI-SPATTER 210

No nasty ingredients, safe, non-toxic and clean, but it actually works.

- A water based anti-spatter with amazing results.
- Safe, non-toxic and clean - you can galvanise and paint immediately after.
- Replacement spray applicator bottles available.



500ml
SPXLAB00050

From
\$12.13^{ea}



4L
SPXLAB0400

\$31.82^{ea}



20L
SPXLAB2000

\$126.98^{ea}

Pack of 12
\$9.59^{ea}

XL Weld Anti-Spatter

Non-flammable for MIG and electric welding to prevent weld spatter adhering to metal surfaces.

- A highly effective advanced formula.
- Large 600g can.



600g - SPXLWAS600

\$15.98^{ea}

Pack of 12
\$11.99^{ea}

Pack of 48
\$10.19^{ea}

euromarc CRAFTSMAN

HANDYMAN 301



WSGHC30109

- **Quality cow hide leather**
- Providing a longer lasting and harder wearing glove.
- **Inner lining on the palm**
- Providing greater heat resistance and comfort.
- **Heavy duty extended cuff**
- For added protection against sparks and other debris.

Sizes

- One size fits all (Large).

\$5.99^{ea}

12 or more
\$4.50^{ea}

BUY 24 GET 12
FREE



euromarc[®]
ELITE

CERAMIC
FLAP DISC **103**



Premium Ceramic grain, on a heavy duty flat nylon backing.

- Engineered for consistent and fast removal over the life of the disc.
- Thicker more rigid nylon backing and flat shape allow the whole edge of the disc to engage on the job, so you don't get a dimpled uneven finish, like with other flap discs.

Operation

- Heavy duty removal
- Flat sanding and finishing
- Stainless, Steel, Aluminium

Grit

P40, P60, P80

Sizes

115 and 125mm



115mm

\$6.02ea

Pack of 10
\$5.39ea

Carton of 20
\$4.85ea

125mm

\$6.53ea

Pack of 10
\$5.88ea

Carton of 20
\$5.30ea

PRECISION SHAPED GRAIN. STAYS SHARP UNDER PRESSURE.



PRECISION SHAPED GRAIN



COOLING TECHNOLOGY



DEERFOS Bora9 Ceramic Fibre Disc

Experience the aggressive, cool cutting and long life generated by the sharp precision shaped grain.

Specialised top coating & new generation precision shaped grain

Purple coated sanding disc reduces clogging, friction, and heat build up, maintaining the sharpness of the grain. The evenly applied top coating follows the shape of the grain, exposing the whole of the grain, rather than half being submerged like other standard top coats.

Superior backing

Thicker fibre backing on coarser grits. (36 & 60g) Means reduced heat build-up in heavy grinding.

Less disc changes = more grinding time

Customers have observed that they have had four times the life from Bora9 opposed to standard fibre sanding discs.

Grit

P36, P60, P80 and P120

Sizes

100, 115, 125 and 180mm



100mm

Pack of 25 from
\$1.07ea

125mm

Pack of 25 from
\$1.90ea

115mm

Pack of 25 from
\$1.44ea

180mm

Pack of 25 from
\$3.76ea

SUPER SPECIAL PRICING

Available on carton quantities
Login to euromarc.co.nz

CUTTING DISCS



euromarc
ELITE+

THIN CUTTING

911



Long Cutting Life

The best European quality. The ELITE+ 911 has a sharp grain for cooler cutting as the grain breaks down it exposes new cutting edges allowing it to last longer and continue to cut for a longer length of time. Inox -100% contamination free.

Suitable for

Excellent in stainless steel and steel cutting.

Sizes (mm)

- 115x1.0 - SLVPI11510
- 115x1.2 - SLVPI11513
- 125x1.0 - SLVPI12510
- 125x1.2 - SLVPI12513
- 125.1.6 - SLVPH12516
- 180x1.8 - SLVPI18018
- 230x2.0 - SLVPI23020

115x1.0mm

125x1.0mm

\$2.56ea

\$2.77ea

Pack of 50
\$2.15ea

Pack of 50
\$2.26ea

Carton of 400
\$1.95ea

Carton of 400
\$2.05ea



SPRAYS

Surface and Equipment Sanitiser - 500ml

- Sanitises soft and hard surfaces.
- Kills a range of bacteria, enveloped viruses, fungi and yeast.
- Kills 99.99% of germs. Effective against a wide range of pathogens. Alcohol based.
- Rapidly evaporates without leaving an odour QAC free.
- Excellent for use on hard to reach areas.
- Surface disinfection with 62-71% ethanol significantly reduces corona virus infectivity on surfaces within 1 minute exposure time.
- Available individually or in packs of 12.



SPCHSE0500

\$18.25ea

Pack of 12
\$17.80ea

Hand Sanitiser - 400ml

- Quick acting and highly effective alcohol based hand sanitiser.
- Kills a range of bacteria, enveloped viruses, fungi and yeast. Alcohol based.
- Kills 99.99% of germs. Effective against a wide range of pathogens.
- Rapidly evaporates from hands without leaving an odour.
- Contains an emollient to moisturise hands.
- Fragrance free.
- Disinfects hands wherever soap and water are not readily available.
- Ethyl alcohol will kill most bacteria, including mycobacteria, and is effective in concentrations over 60%.
- Benzalkonium chloride is a fast-acting biocidal agent with a moderately long duration of action. It remains active and effective for up to 4 hours.
- Available individually or in packs of 12.



SPCHSH0400

\$18.25ea

Pack of 12
\$17.80ea

WE WON'T LEAVE YOU HANGING

17 MINUTES

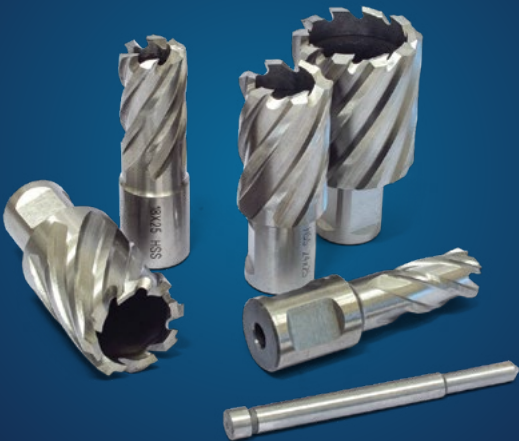
Jan-Jun 2022
average response rate



QuickResponse

Check out the \$100 Quick Response guarantee at euromarc.co.nz/guarantees

HSS Annular Cutter -25mm Depth



25mm cutting depth HSS Annular Cutter for use on most metals.

- Cutters save time and energy compared with other drilling methods, drilling speeds upto 3 times faster than twist drills.
- No step drilling required, just real quality, with a burr-free finish hole.
- Versatility to fit most magnetic drill brands.
- Available in diameters from 12 – 60mm.
- For use with 79mm ejector pins.
- 50mm length cutters also available.
- TCT cutters also available.

LARGE RANGE INSTOCK

From 10mm - 60mm
Login to euromarc.co.nz

From
\$39.98ea

euromarc[®] ELITE

COBALT
STEP DRILL **521**

- 90° angle, 3 flute countersink.
- HSS - Cobalt for all metals.
- 6.3- 40mm straight shank.
- 43-50mm are morse taper fitting.
- 1200N/mm2.



6-20mm
DRBSTD0420

\$66.92ea

6-30mm
DRBSTD0630

\$124.38ea

euromarc[®] ELITE

SINGLE END
STUB DRILL **504**



- 135° split point.
- HSS fully ground.
- Great sizing for rivets.
- Double ended stub drills also available.



3.30mm
DRTSTUS330

Pack of 10
\$1.24ea

4.10mm
DRTSTUS410

Pack of 10
\$1.58ea

4.90mm
DRTSTUS490

Pack of 10
\$1.68ea

Tungsten Carbide Burrs Set

- Large 13mm head
- 5 piece carbide burr set.
- Double cut for clean and fast cutting.
- Available in double or aluminium cut.
- Comes with a plastic protective case.



TBSM5PESET

Double Cut
\$235.35ea

TBSM5ALSET

Aluminium
\$318.21ea

euromarc[®] ELITE

3 FLUTE
COUNTERSINK **525**

- 90° angle, 3 flute countersink.
- HSS - Cobalt for all metals.
- 6.3-40mm straight shank.
- 43-50mm are morse taper fitting.
- 1200N/mm2

Sizes

- 6.3mm - DRACOS3063.
- 10.4mm - DRACOS3104.
- 12.4mm - DRACOS3124.
- 16.5mm - DRACOS3165.
- 20.5mm - DRACOS3205.
- 25.0mm - DRACOS3250.
- 31.0mm - DRACOS3300.



From
\$24.68ea

SB Cylindrical End/ Double Cut Burr

- For stainless steel and steel, 6mm shank
- High quality tungsten carbide material
- Surface milling, contours and right angle corners, straight burr.

Sizes

- All shanks are 6mm Ø.
- 6x16mm - TB-SB1D/CM.
- 10x20mm - TB-SB3D/CM.
- 13x25mm - TB-SB5D/CM.



From
\$29.08ea

SC Cylindrical Ball Nose Cut Burr

- For stainless steel and steel, 6mm shank.
- High quality tungsten carbide material.
- Machining contours and circular arcs.

Sizes

- All shanks are 6mm Ø.
- 6x16mm - TB-SC1D/CM.
- 10x20mm - TB-SC3D/CM.
- 13x25mm - TB-SC5D/CM.



From
\$31.28ea

SE Oval Shape Double Cut Burr

- For stainless steel and steel, 6mm shank.
- High quality tungsten carbide material.
- Rounded contouring and end milling.

Sizes

- All shanks are 6mm Ø.
- 6x16mm - TB-SE1D/CM.
- 10x20mm - TB-SE5D/CM.
- 13x25mm - TB-SE3D/CM.



From
\$34.00ea

SF Tree Shape Round Nose Burr

- For stainless steel and steel, 6mm shank.
- High quality tungsten carbide material.
- Multi-angle contouring, rounded and narrow.

Sizes

- All shanks are 6mm Ø.
- 6x16mm - TB-SF1D/CM.
- 10x20mm - TB-SF3D/CM.
- 13x25mm - TB-SF5D/CM.



From
\$33.91ea

SL Cone Round Nose Double Cut Burr

- For stainless steel and steel, 6mm shank.
- High quality tungsten carbide material.
- Enlarging holes, rounded edges and narrow places.

Sizes

- All shanks are 6mm Ø.
- 6x16mm - TB-SL1D/CM.
- 10x25mm - TB-SL3D/CM.
- 13x25mm - TB-SL4D/CM.
- 16x30mm - TB-SL5D/CM.



From
\$34.00ea

SG Tree Pointed Nose Double Cut Burr

- For stainless steel and steel, 6mm shank.
- High quality tungsten carbide material.
- Multi angle contouring, pointed and narrow places.

Sizes

- All shanks are 6mm Ø.
- 6x16mm - TB-SG1D/CM.
- 10x20mm - TB-SG3D/CM.
- 13x25mm - TB-SG5D/CM.



From
\$34.70ea

SM Cone Pointed Nose Double Cut Burr

- For stainless steel and steel, 6mm shank.
- High quality tungsten carbide material.
- Fine contours, pointed and narrow places, enlarging holes.

Sizes

- All shanks are 6mm Ø
- 6x16mm - TB-SM1D/CM.
- 10x20mm - TB-SM4D/CM.
- 13x25mm - TB-SM5D/CM.



From
\$34.00ea

SD Ball Shape Double Cut Burr

- For stainless steel and steel, 6mm shank.
- High quality tungsten carbide material.
- Rounded end milling, preparing for welding.

Sizes

- All shanks are 6mm Ø.
- 6x6mm - TB-SD1D/CM.
- 10x10mm - TB-SD3D/CM.
- 13x13mm - TB-SD5D/CM.
- 16x16mm - TB-SD6D/CM.



From
\$28.65ea

SH Flame Shape Double Cut Burr

- For stainless steel and steel, 6mm shank.
- High quality tungsten carbide material.
- Round edge, milling, preparing for welding.

Sizes

- All shanks are 6mm Ø.
- 8x20mm - TB-SH2D/CM.
- 13x25mm m- TB-SH5D/CM.
- 15x36mm - TB-SH6D/CM.



From
\$41.19ea

HAVE A TRADE LOGIN?

Login to view:

- Your trade pricing & quantity discounts.
- Live product availability.
- View your latest statement & invoices.
- See courier tracking details.
- Connect directly to your trade account.

ELITE JOBBER DRILL 507 - METRIC

For the Highest Performance use Gold Black drills, with 3 flat shank and a special split point, for extra fast and precision cutting.

PRODUCT/CODE	SIZE	AVAILABILITY	EACH/PACK/CARTON	QTY
DRTJOB0010 View Spec	10mm	215	1. \$127 10. \$101	0 Add to Cart Add to Quick Order
DRTJOB0015 View Spec	15mm	233	1. \$127 10. \$101	0 Add to Cart Add to Quick Order
DRTJOB0020 View Spec	20mm	705	1. \$133 10. \$109	0 Add to Cart Add to Quick Order
DRTJOB0024 View Spec	24mm	65	1. \$134 10. \$112	0 Add to Cart Add to Quick Order
DRTJOB0026 View Spec	25mm	310	1. \$138 10. \$112	0 Add to Cart Add to Quick Order
DRTJOB0027 View Spec	27mm	Low Stock	1. \$138 10. \$113	0 Add to Cart Add to Quick Order

AVAILABILITY

See live stock numbers available in our warehouse for immediate delivery.

TRADE PRICING & QUANTITY DISCOUNTS

Easily view your trade pricing and quantity discounts.

LOGIN
REGISTER

Login to access QUICKORDER™ trade pricing and account information.

Don't have an account? Create one by clicking REGISTER.

ORDER PAD
 LOGIN REGISTER

LOGIN

Email Address

Password [IFORGOT?](#)

SIGN IN

Don't have an account?

[CREATE AN ACCOUNT](#)

Forgotten your password? Simply click LOGIN, then click **IFORGOT?**